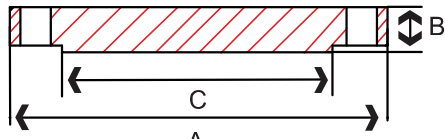


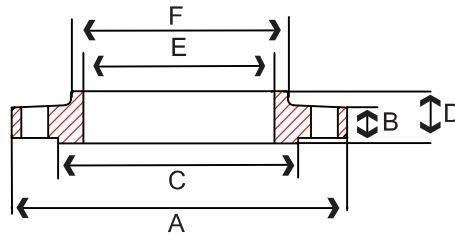


# Stainless Flanges - 150#

FLANGES



Blind Flange



Slip-On Flange

## 150# – Blind Raised Face Flange

Size in	Part Number		A in	B in	C in	Bolt Circle in	Bolt Hole Diameter in	Number of Bolt Holes	Weight lb
	304/304L	316/316L							
1/2	S1014BL004N	S1016BL004N	3.50	0.44	1.38	2.38	0.62	4	1
3/4	S1014BL006N	S1016BL006N	3.88	0.50	1.69	2.75	0.62	4	2
1	S1014BL010N	S1016BL010N	4.25	0.56	2.00	3.12	0.62	4	2
1-1/4	S1014BL012N	S1016BL012N	4.62	0.62	2.50	3.50	0.62	4	3
1-1/2	S1014BL014N	S1016BL014N	5.00	0.69	2.88	3.88	0.62	4	4
2	S1014BL020N	S1016BL020N	6.00	0.75	3.62	4.75	0.75	4	5
2-1/2	S1014BL024N	S1016BL024N	7.00	0.88	4.12	5.50	0.75	4	7
3	S1014BL030N	S1016BL030N	7.50	0.94	5.00	6.00	0.75	4	9
4	S1014BL040N	S1016BL040N	9.00	0.94	6.19	7.50	0.75	8	17
5	S1014BL050N	S1016BL050N	10.00	0.94	7.31	8.50	0.88	8	20
6	S1014BL060N	S1016BL060N	11.00	1.00	8.50	9.50	0.88	8	26
8	S1014BL080N	S1016BL080N	13.50	1.12	10.62	11.75	0.88	8	45
10	S1014BL100N	S1016BL100N	16.00	1.19	12.75	14.25	1.00	12	70
12	S1014BL120N	S1016BL120N	19.00	1.25	15.00	17.00	1.00	12	110

Raised Face 1/16"

## 150# – Slip-On Raised Face Flange

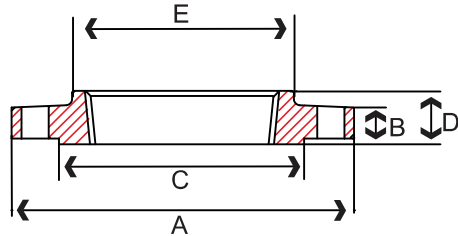
Size in	Part Number		A in	B in	C in	D in	E in	F in	Bolt Circle in	Bolt Hole Diameter in	Number of Bolt Holes	Weight lb
	304/304L	316/316L										
1/2	S1014SO004N	S1016SO004N	3.50	0.44	1.38	0.62	0.88	1.19	2.38	0.62	4	1
3/4	S1014SO006N	S1016SO006N	3.88	0.50	1.69	0.62	1.09	1.50	2.75	0.62	4	2
1	S1014SO010N	S1016SO010N	4.25	0.56	2.00	0.69	1.36	1.94	3.12	0.62	4	2
1-1/4	S1014SO012N	S1016SO012N	4.62	0.62	2.50	0.81	1.70	2.31	3.50	0.62	4	3
1-1/2	S1014SO014N	S1016SO014N	5.00	0.69	2.88	0.88	1.95	2.56	3.88	0.62	4	3
2	S1014SO020N	S1016SO020N	6.00	0.75	3.62	1.00	2.44	3.06	4.75	0.75	4	5
2-1/2	S1014SO024N	S1016SO024N	7.00	0.88	4.12	1.12	2.94	3.56	5.50	0.75	4	7
3	S1014SO030N	S1016SO030N	7.50	0.94	5.00	1.19	3.57	4.25	6.00	0.75	4	8
4	S1014SO040N	S1016SO040N	9.00	0.94	6.19	1.31	4.60	5.31	7.50	0.75	8	13
5	S1014SO050N	S1016SO050N	10.00	0.94	7.31	1.44	5.66	6.44	8.50	0.88	8	15
6	S1014SO060N	S1016SO060N	11.00	1.00	8.50	1.56	6.72	7.56	9.50	0.88	8	19
8	S1014SO080N	S1016SO080N	13.50	1.12	10.62	1.75	8.72	9.69	11.75	0.88	8	30
10	S1014SO100N	S1016SO100N	16.00	1.19	12.75	1.94	10.88	12.00	14.25	1.00	12	43
12	S1014SO120N	S1016SO120N	19.00	1.25	15.00	2.19	12.88	14.38	17.00	1.00	12	64

Raised Face 1/16"

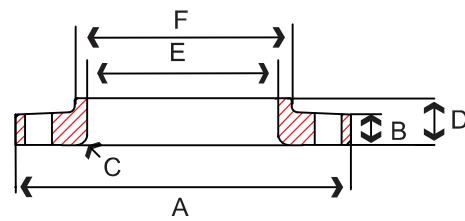


## Stainless Flanges - 150#

FLANGES



Threaded Flange



Lap Joint Flange

### 150# – Threaded Raised Face Flange

Size in	Part Number		A in	B in	C in	D in	E in	Bolt Circle in	Bolt Hole Diameter in	Number of Bolt Holes	Weight lb
	304/304L	316/316L									
1/2	S1014TH004N	S1016TH004N	3.50	0.44	1.38	0.62	1.19	2.38	0.62	4	1
3/4	S1014TH006N	S1016TH006N	3.88	0.50	1.69	0.62	1.50	2.75	0.62	4	2
1	S1014TH010N	S1016TH010N	4.25	0.56	2.00	0.69	1.94	3.12	0.62	4	2
1-1/4	S1014TH012N	S1016TH012N	4.62	0.62	2.50	0.81	2.31	3.50	0.62	4	3
1-1/2	S1014TH014N	S1016TH014N	5.00	0.69	2.88	0.88	2.56	3.88	0.62	4	3
2	S1014TH020N	S1016TH020N	6.00	0.75	3.62	1.00	3.06	4.75	0.75	4	5
2-1/2	S1014TH024N	S1016TH024N	7.00	0.88	4.12	1.12	3.56	5.50	0.75	4	7
3	S1014TH030N	S1016TH030N	7.50	0.94	5.00	1.19	4.25	6.00	0.75	4	8
4	S1014TH040N	S1016TH040N	9.00	0.94	6.19	1.31	5.31	7.50	0.75	8	13
5	S1014TH050N	S1016TH050N	10.00	0.94	7.31	1.44	6.44	8.50	0.88	8	15
6	S1014TH060N	S1016TH060N	11.00	1.00	8.50	1.56	7.56	9.50	0.88	8	19

Raised Face 1/16"

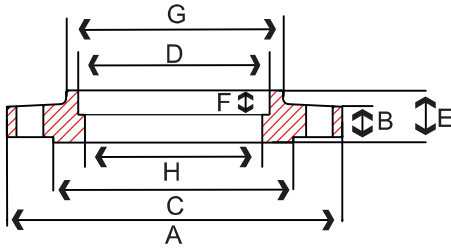
### 150# – Lap Joint Flange

Size in	Part Number		A in	B in	C in	D in	E in	F in	Bolt Circle in	Bolt Hole Diameter in	Number of Bolt Holes	Weight lb
	304/304L	316/316L										
1/2	S1014LJ004N	S1016LJ004N	3.50	0.44	0.12	0.62	0.90	1.19	2.38	0.62	4	1
3/4	S1014LJ006N	S1016LJ006N	3.88	0.50	0.12	0.62	1.11	1.50	2.75	0.62	4	2
1	S1014LJ010N	S1016LJ010N	4.25	0.56	0.12	0.69	1.38	1.94	3.12	0.62	4	2
1-1/4	S1014LJ012N	S1016LJ012N	4.62	0.62	0.19	0.81	1.72	2.31	3.50	0.62	4	3
1-1/2	S1014LJ014N	S1016LJ014N	5.00	0.69	0.25	0.88	1.97	2.56	3.88	0.62	4	3
2	S1014LJ020N	S1016LJ020N	6.00	0.75	0.31	1.00	2.46	3.06	4.75	0.75	4	5
2-1/2	S1014LJ024N	S1016LJ024N	7.00	0.88	0.31	1.12	2.97	3.56	5.50	0.75	4	7
3	S1014LJ030N	S1016LJ030N	7.50	0.94	0.38	1.19	3.60	4.25	6.00	0.75	4	8
3-1/2	S1014LJ034N	S1016LJ034N	8.50	0.94	0.38	1.25	4.10	4.81	7.00	0.75	8	11
4	S1014LJ040N	S1016LJ040N	9.00	0.94	0.44	1.31	4.60	5.31	7.50	0.75	8	13
5	S1014LJ050N	S1016LJ050N	10.00	0.94	0.44	1.44	5.69	6.44	8.50	0.88	8	15
6	S1014LJ060N	S1016LJ060N	11.00	1.00	0.50	1.56	6.75	7.56	9.50	0.88	8	19
8	S1014LJ080N	S1016LJ080N	13.50	1.12	0.50	1.75	8.75	9.69	11.75	0.88	8	30
10	S1014LJ100N	S1016LJ100N	16.00	1.19	0.50	1.94	10.92	12.00	14.25	1.00	12	43
12	S1014LJ120N	S1016LJ120N	19.00	1.25	0.50	2.19	12.92	14.38	17.00	1.00	12	64

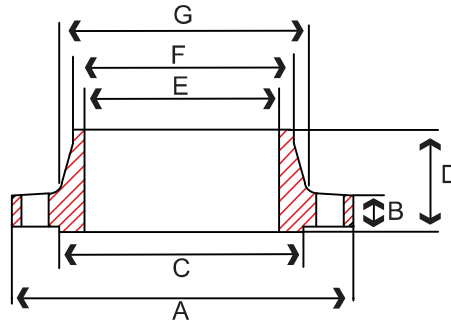


# Stainless Flanges - 150#

FLANGES



Socket Weld Flange



Weld Neck Flange

## 150# Schedule 40 – Socket Weld Raised Face Flange

Size in	Part Number		A in	B in	C in	D in	E in	F in	G in	H in	Bolt Circle in	Bolt Hole Diameter in	Number of Bolt Holes	Weight lb
	304/304L	316/316L												
1/2	S1014SW4004N	S1016SW4004N	3.50	0.44	1.38	0.88	0.62	0.38	1.19	0.62	2.38	0.62	4	1
3/4	S1014SW4006N	S1016SW4006N	3.88	0.50	1.69	1.09	0.62	0.44	1.50	0.82	2.75	0.62	4	2
1	S1014SW4010N	S1016SW4010N	4.25	0.56	2.00	1.36	0.69	0.50	1.94	1.05	3.12	0.62	4	2
1-1/4	S1014SW4012N	S1016SW4012N	4.62	0.62	2.50	1.70	0.81	0.56	2.31	1.38	3.50	0.62	4	3
1-1/2	S1014SW4014N	S1016SW4014N	5.00	0.69	2.88	1.95	0.88	0.62	2.56	1.61	3.88	0.62	4	3
2	S1014SW4020N	S1016SW4020N	6.00	0.75	3.62	2.44	1.00	0.69	3.06	2.07	4.75	0.75	4	5
2-1/2	S1014SW4024N	S1016SW4024N	7.00	0.88	4.12	2.94	1.12	0.75	3.56	2.47	5.50	0.75	4	7
3	S1014SW4030N	S1016SW4030N	7.50	0.94	5.00	3.57	1.19	0.81	4.25	3.07	6.00	0.75	4	8
4	S1014SW4040N	S1016SW4040N	9.00	0.94	6.19	4.60	1.31	0.94	5.31	4.03	7.50	0.75	8	13
5	S1014SW4050N	S1016SW4050N	10.00	0.94	7.31	5.66	1.44	0.94	6.44	5.05	8.50	0.88	8	15
6	S1014SW4060N	S1016SW4060N	11.00	1.00	8.50	6.72	1.56	1.06	7.56	6.07	9.50	0.88	8	19

Raised Face 1/16"

## 150# Schedule 80 – Socket Weld Raised Face Flange

Size in	Part Number		A in	B in	C in	D in	E in	F in	G in	H in	Bolt Circle in	Bolt Hole Diameter in	Number of Bolt Holes	Weight lb
	304/304L	316/316L												
1/2	S1014SW8004N	S1016SW8004N	3.50	0.44	1.38	0.54	0.62	0.38	1.19	0.62	2.38	0.62	4	1
3/4	S1014SW8006N	S1016SW8006N	3.88	0.50	1.69	0.74	0.62	0.44	1.50	0.82	2.75	0.62	4	2
1	S1014SW8010N	S1016SW8010N	4.25	0.56	2.00	0.95	0.69	0.50	1.94	1.05	3.12	0.62	4	2
1-1/4	S1014SW8012N	S1016SW8012N	4.62	0.62	2.50	1.27	0.81	0.56	2.31	1.38	3.50	0.62	4	3
1-1/2	S1014SW8014N	S1016SW8014N	5.00	0.69	2.88	1.50	0.88	0.62	2.56	1.61	3.88	0.62	4	3
2	S1014SW8020N	S1016SW8020N	6.00	0.75	3.62	1.94	1.00	0.69	3.06	2.07	4.75	0.75	4	5
2-1/2	S1014SW8024N	S1016SW8024N	7.00	0.88	4.12	2.32	1.12	0.75	3.56	2.47	5.50	0.75	4	7
3	S1014SW8030N	S1016SW8030N	7.50	0.94	5.00	2.90	1.19	0.81	4.25	3.07	6.00	0.75	4	8
4	S1014SW8040N	S1016SW8040N	9.00	0.94	6.19	3.82	1.31	0.94	5.31	4.03	7.50	0.75	8	13

Raised Face 1/16"



## Stainless Flanges - 150#

FLANGES

### 150# Schedule 10 – Weld Neck Raised Face Flange

Size in	Part Number		A in	B in	C in	D in	E in	F in	G in	Bolt Circle in	Bolt Hole Diameter in	Number of Bolt Holes	Weight lb
	304/304L	316/316L											
1/2	S1014WN1004N	S1016WN1004N	3.50	0.44	1.38	1.88	0.67	0.84	1.19	2.38	0.62	4	2
3/4	S1014WN1006N	S1016WN1006N	3.88	0.50	1.69	2.06	0.88	1.05	1.50	2.75	0.62	4	2
1	S1014WN1010N	S1016WN1010N	4.25	0.56	2.00	2.19	1.09	1.32	1.94	3.12	0.62	4	3
1-1/4	S1014WN1012N	S1016WN1012N	4.62	0.62	2.50	2.25	1.44	1.66	2.31	3.50	0.62	4	3
1-1/2	S1014WN1014N	S1016WN1014N	5.00	0.69	2.88	2.44	1.68	1.90	2.56	3.88	0.62	4	4
2	S1014WN1020N	S1016WN1020N	6.00	0.75	3.62	2.50	2.15	2.38	3.06	4.75	0.75	4	6
2-1/2	S1014WN1024N	S1016WN1024N	7.00	0.88	4.12	2.75	2.63	2.88	3.56	5.50	0.75	4	8
3	S1014WN1030N	S1016WN1030N	7.50	0.94	5.00	2.75	3.26	3.50	4.25	6.00	0.75	4	10
4	S1014WN1040N	S1016WN1040N	9.00	0.94	6.19	3.00	4.26	4.50	5.31	7.50	0.75	8	15
5	S1014WN1050N	S1016WN1050N	10.00	0.94	7.31	3.50	5.29	5.56	6.44	8.50	0.88	8	19
6	S1014WN1060N	S1016WN1060N	11.00	1.00	8.50	3.50	6.35	6.63	7.56	9.50	0.88	8	24
8	S1014WN1080N	S1016WN1080N	13.50	1.12	10.62	4.00	8.32	8.63	9.69	11.75	0.88	8	39
10	S1014WN1100N	S1016WN1100N	16.00	1.19	12.75	4.00	10.42	10.75	12.00	14.25	1.00	12	52
12	S1014WN1120N	S1016WN1120N	19.00	1.25	15.00	4.50	12.39	12.75	14.38	17.00	1.00	12	80

Raised Face 1/16"

### 150# Schedule 40 – Weld Neck Raised Face Flange

Size in	Part Number		A in	B in	C in	D in	E in	F in	G in	Bolt Circle in	Bolt Hole Diameter in	Number of Bolt Holes	Weight lb
	304/304L	316/316L											
1/2	S1014WN4004N	S1016WN4004N	3.50	0.44	1.38	1.88	0.62	0.84	1.19	2.38	0.62	4	2
3/4	S1014WN4006N	S1016WN4006N	3.88	0.50	1.69	2.06	0.82	1.05	1.50	2.75	0.62	4	2
1	S1014WN4010N	S1016WN4010N	4.25	0.56	2.00	2.19	1.05	1.32	1.94	3.12	0.62	4	3
1-1/4	S1014WN4012N	S1016WN4012N	4.62	0.62	2.50	2.25	1.38	1.66	2.31	3.50	0.62	4	3
1-1/2	S1014WN4014N	S1016WN4014N	5.00	0.69	2.88	2.44	1.61	1.90	2.56	3.88	0.62	4	4
2	S1014WN4020N	S1016WN4020N	6.00	0.75	3.62	2.50	2.07	2.38	3.06	4.75	0.75	4	6
2-1/2	S1014WN4024N	S1016WN4024N	7.00	0.88	4.12	2.75	2.47	2.88	3.56	5.50	0.75	4	8
3	S1014WN4030N	S1016WN4030N	7.50	0.94	5.00	2.75	3.07	3.50	4.25	6.00	0.75	4	10
4	S1014WN4040N	S1016WN4040N	9.00	0.94	6.19	3.00	4.03	4.50	5.31	7.50	0.75	8	15
5	S1014WN4050N	S1016WN4050N	10.00	0.94	7.31	3.50	5.05	5.56	6.44	8.50	0.88	8	19
6	S1014WN4060N	S1016WN4060N	11.00	1.00	8.50	3.50	6.07	6.63	7.56	9.50	0.88	8	24
8	S1014WN4080N	S1016WN4080N	13.50	1.12	10.62	4.00	7.98	8.63	9.69	11.75	0.88	8	39
10	S1014WN4100N	S1016WN4100N	16.00	1.19	12.75	4.00	10.02	10.75	12.00	14.25	1.00	12	52
12	S1014WN4120N	S1016WN4120N	19.00	1.25	15.00	4.50	12.00	12.75	14.38	17.00	1.00	12	80

Raised Face 1/16"

### 150# Schedule 80 – Weld Neck Raised Face Flange

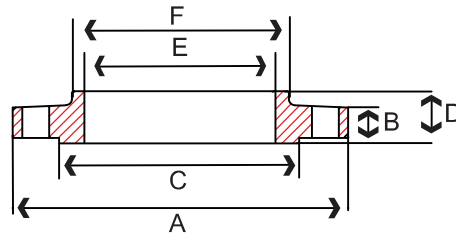
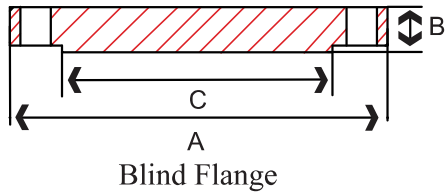
Size in	Part Number		A in	B in	C in	D in	E in	F in	G in	Bolt Circle in	Bolt Hole Diameter in	Number of Bolt Holes	Weight lb
	304/304L	316/316L											
1/2	S1014WN8004N	S1016WN8004N	3.50	0.44	1.38	1.88	0.54	0.84	1.19	2.38	0.62	4	2
3/4	S1014WN8006N	S1016WN8006N	3.88	0.50	1.69	2.06	0.74	1.05	1.50	2.75	0.62	4	2
1	S1014WN8010N	S1016WN8010N	4.25	0.56	2.00	2.19	0.95	1.32	1.94	3.12	0.62	4	3
1-1/4	S1014WN8012N	S1016WN8012N	4.62	0.62	2.50	2.25	1.27	1.66	2.31	3.50	0.62	4	3
1-1/2	S1014WN8014N	S1016WN8014N	5.00	0.69	2.88	2.44	1.50	1.90	2.56	3.88	0.62	4	4
2	S1014WN8020N	S1016WN8020N	6.00	0.75	3.62	2.50	1.93	2.38	3.06	4.75	0.75	4	6
2-1/2	S1014WN8024N	S1016WN8024N	7.00	0.88	4.12	2.75	2.32	2.88	3.56	5.50	0.75	4	8
3	S1014WN8030N	S1016WN8030N	7.50	0.94	5.00	2.75	2.90	3.50	4.25	6.00	0.75	4	10
4	S1014WN8040N	S1016WN8040N	9.00	0.94	6.19	3.00	3.82	4.50	5.31	7.50	0.75	8	15
6	S1014WN8060N	S1016WN8060N	11.00	1.00	8.50	3.50	5.76	6.63	7.56	9.50	0.88	8	24
8	S1014WN8080N	S1016WN8080N	13.50	1.12	10.62	4.00	7.62	8.63	9.69	11.75	0.88	8	39
10	S1014WN8100N	S1016WN8100N	16.00	1.19	12.75	4.00	9.75	10.75	12.00	14.25	1.00	12	52
12	S1014WN8120N	S1016WN8120N	19.00	1.25	15.00	4.50	11.75	12.75	14.38	17.00	1.00	12	80

Raised Face 1/16"



# Stainless Flanges - 300#

FLANGES



## 300# – Blind Raised Face Flange

Size in	Part Number		A in	B in	C in	Bolt Circle in	Bolt Hole Diameter in	Number of Bolt Holes	Weight lb
	304/304L	316/316L							
1/2	S1034BL004N	S1036BL004N	3.75	0.56	1.38	2.62	0.62	4	2
3/4	S1034BL006N	S1036BL006N	4.62	0.62	1.69	3.25	0.75	4	3
1	S1034BL010N	S1036BL010N	4.88	0.69	2.00	3.50	0.75	4	3
1-1/4	S1034BL012N	S1036BL012N	5.25	0.75	2.50	3.88	0.75	4	4
1-1/2	S1034BL014N	S1036BL014N	6.12	0.81	2.88	4.50	0.88	4	6
2	S1034BL020N	S1036BL020N	6.50	0.88	3.62	5.00	0.75	8	8
2-1/2	S1034BL024N	S1036BL024N	7.50	1.00	4.12	5.88	0.88	8	12
3	S1034BL030N	S1036BL030N	8.25	1.12	5.00	6.62	0.88	8	16
4	S1034BL040N	S1036BL040N	10.00	1.25	6.19	7.88	0.88	8	27
6	S1034BL060N	S1036BL060N	12.50	1.44	8.50	10.62	0.88	12	50
8	S1034BL080N	S1036BL080N	15.00	1.62	10.62	13.00	1.00	12	81
10	S1034BL100N	S1036BL100N	17.50	1.88	12.75	15.25	1.12	12	124
12	S1034BL120N	S1036BL120N	20.50	2.00	15.00	17.75	1.25	12	185

Raised Face 1/16"

## 300# – Slip-On Raised Face Flange

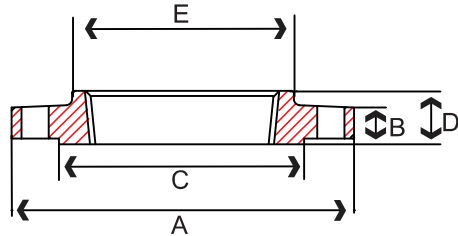
Size in	Part Number		A in	B in	C in	D in	E in	F in	Bolt Circle in	Bolt Hole Diameter in	Number of Bolt Holes	Weight lb
	304/304L	316/316L										
1/2	S1034SO004N	S1036SO004N	3.75	0.56	1.38	0.88	0.88	1.50	2.62	0.62	4	2
3/4	S1034SO006N	S1036SO006N	4.62	0.62	1.69	1.00	1.09	1.88	3.25	0.75	4	3
1	S1034SO010N	S1036SO010N	4.88	0.69	2.00	1.06	1.36	2.12	3.50	0.75	4	3
1-1/4	S1034SO012N	S1036SO012N	5.25	0.75	2.50	1.06	1.70	2.50	3.88	0.75	4	4
1-1/2	S1034SO014N	S1036SO014N	6.12	0.81	2.88	1.19	1.95	2.75	4.50	0.88	4	6
2	S1034SO020N	S1036SO020N	6.50	0.88	3.62	1.31	2.44	3.31	5.00	0.75	8	7
2-1/2	S1034SO024N	S1036SO024N	7.50	1.00	4.12	1.50	2.94	3.94	5.88	0.88	8	10
3	S1034SO030N	S1036SO030N	8.25	1.12	5.00	1.69	3.57	4.62	6.62	0.88	8	13
4	S1034SO040N	S1036SO040N	10.00	1.25	6.19	1.88	4.60	5.75	7.88	0.88	8	22
6	S1034SO060N	S1036SO060N	12.50	1.44	8.50	2.06	6.72	8.12	10.62	0.88	12	39
8	S1034SO080N	S1036SO080N	15.00	1.62	10.62	2.44	8.72	10.25	13.00	1.00	12	58
10	S1034SO100N	S1036SO100N	17.50	1.88	12.75	2.62	10.88	12.62	15.25	1.12	12	81
12	S1034SO120N	S1036SO120N	20.50	2.00	15.00	2.88	12.88	14.75	17.75	1.25	12	115

Raised Face 1/16"

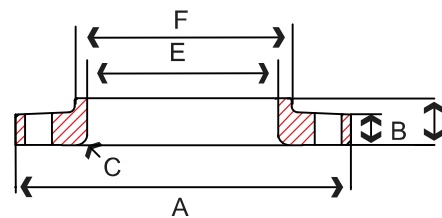


## Stainless Flanges - 300#

FLANGES



Threaded Flange



Lap Joint Flange

### 300# – Threaded Raised Face Flange

Size in	Part Number		A in	B in	C in	D in	E in	Bolt Circle in	Bolt Hole Diameter in	Number of Bolt Holes	Weight lb
	304/304L	316/316L									
1/2	S1034TH004N	S1036TH004N	3.75	0.56	1.38	0.88	1.50	2.62	0.62	4	2
3/4	S1034TH006N	S1036TH006N	4.62	0.62	1.69	1.00	1.88	3.25	0.75	4	3
1	S1034TH010N	S1036TH010N	4.88	0.69	2.00	1.06	2.12	3.50	0.75	4	3
1-1/4	S1034TH012N	S1036TH012N	5.25	0.75	2.50	1.06	2.50	3.88	0.75	4	4
1-1/2	S1034TH014N	S1036TH014N	6.12	0.81	2.88	1.19	2.75	4.50	0.88	4	6
2	S1034TH020N	S1036TH020N	6.50	0.88	3.62	1.31	3.31	5.00	0.75	8	7
3	S1034TH030N	S1036TH030N	8.25	1.12	5.00	1.69	4.62	6.62	0.88	8	13
4	S1034TH040N	S1036TH040N	10.00	1.25	6.19	1.88	5.75	7.88	0.88	8	22

Raised Face 1/16"

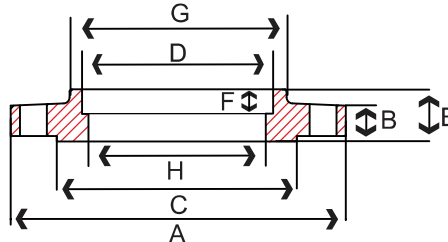
### 300# – Lap Joint Flange

Size in	Part Number		A in	B in	C in	D in	E in	F in	Bolt Circle in	Bolt Hole Diameter in	Number of Bolt Holes	Weight lb
	304/304L	316/316L										
1/2	S1034LJ004N	S1036LJ004N	3.75	0.56	0.12	0.88	0.90	1.50	2.62	0.62	4	2
3/4	S1034LJ006N	S1036LJ006N	4.62	0.62	0.12	1.00	1.11	1.88	3.25	0.75	4	3
1	S1034LJ010N	S1036LJ010N	4.88	0.69	0.12	1.06	1.38	2.12	3.50	0.75	4	3
1-1/4	S1034LJ012N	S1036LJ012N	5.25	0.75	0.19	1.06	1.72	2.50	3.88	0.75	4	4
1-1/2	S1034LJ014N	S1036LJ014N	6.12	0.81	0.25	1.19	1.97	2.75	4.50	0.88	4	6
2	S1034LJ020N	S1036LJ020N	6.50	0.88	0.31	1.31	2.46	3.31	5.00	0.75	8	7
3	S1034LJ030N	S1036LJ030N	8.25	1.12	0.38	1.69	3.60	4.62	6.62	0.88	8	13
4	S1034LJ040N	S1036LJ040N	10.00	1.25	0.44	1.88	4.60	5.75	7.88	0.88	8	22



# Stainless Flanges - 300#

FLANGES



Socket Weld Flange

### 300# Schedule 40 – Socket Weld Raised Face Flange

Size in	Part Number		A in	B in	C in	D in	E in	F in	G in	H in	Bolt Circle in	Bolt Hole Diameter in	Number of Bolt Holes	Weight lb
	304/304L	316/316L												
1/2	S1034SW4004N	S1036SW4004N	3.75	0.56	1.38	0.88	0.88	0.38	1.50	0.62	2.62	0.62	4	2
3/4	S1034SW4006N	S1036SW4006N	4.62	0.62	1.69	1.09	1.00	0.44	1.88	0.82	3.25	0.75	4	3
1	S1034SW4010N	S1036SW4010N	4.88	0.69	2.00	1.36	1.06	0.50	2.12	1.05	3.50	0.75	4	3
1-1/4	S1034SW4012N	S1036SW4012N	5.25	0.75	2.50	1.70	1.06	0.56	2.50	1.38	3.88	0.75	4	4
1-1/2	S1034SW4014N	S1036SW4014N	6.12	0.81	2.88	1.95	1.19	0.62	2.75	1.61	4.50	0.88	4	6
2	S1034SW4020N	S1036SW4020N	6.50	0.88	3.62	2.44	1.31	0.69	3.31	2.07	5.00	0.75	8	7
2-1/2	S1034SW4024N	S1036SW4024N	7.50	1.00	4.12	2.94	1.50	0.75	3.94	2.94	5.88	0.88	8	10
3	S1034SW4030N	S1036SW4030N	8.25	1.12	5.00	3.57	1.69	0.81	4.62	3.57	6.62	0.88	8	13
4	S1034SW4040N	S1036SW4040N	10.00	1.25	6.19	4.60	1.88	-	5.75	4.03	7.88	0.88	8	22

Raised Face 1/16"

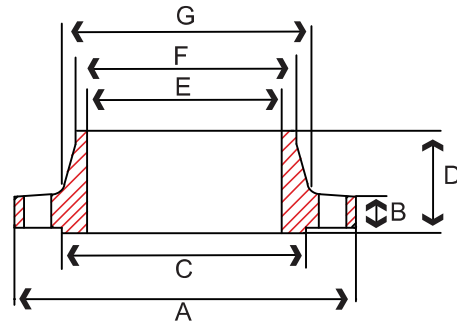
### 300# Schedule 80 – Socket Weld Raised Face Flange

Size in	Part Number		A in	B in	C in	D in	E in	F in	G in	H in	Bolt Circle in	Bolt Hole Diameter in	Number of Bolt Holes	Weight lb
	304/304L	316/316L												
1/2	S1034SW8004N	S1036SW8004N	3.75	0.56	1.38	0.54	0.88	0.38	1.50	0.62	2.62	0.62	4	2
3/4	S1034SW8006N	S1036SW8006N	4.62	0.62	1.69	0.74	1.00	0.44	1.88	0.82	3.25	0.75	4	3
1	S1034SW8010N	S1036SW8010N	4.88	0.69	2.00	0.95	1.06	0.50	2.12	1.05	3.50	0.75	4	3
1-1/4	S1034SW8012N	S1036SW8012N	5.25	0.75	2.50	1.27	1.06	0.56	2.50	1.38	3.88	0.75	4	4
1-1/2	S1034SW8014N	S1036SW8014N	6.12	0.81	2.88	1.50	1.19	0.62	2.75	1.61	4.50	0.88	4	6
2	S1034SW8020N	S1036SW8020N	6.50	0.88	3.62	1.93	1.31	0.69	3.31	2.07	5.00	0.75	8	7
2-1/2	S1034SW8024N	S1036SW8024N	7.50	1.00	4.12	2.32	1.50	0.75	3.94	2.94	5.88	0.88	8	10
3	S1034SW8030N	S1036SW8030N	8.25	1.12	5.00	2.90	1.69	0.81	4.62	3.57	6.62	0.88	8	13
4	S1034SW8040N	S1036SW8040N	10.00	1.25	6.19	3.82	1.88	-	5.75	4.03	7.88	0.88	8	22

Raised Face 1/16"



## Stainless Flanges - 300#



Weld Neck Flange

### 300# Schedule 40 – Weld Neck Raised Face Flange

Size in	Part Number		A in	B in	C in	D in	E in	F in	G in	Bolt Circle in	Bolt Hole Diameter in	Number of Bolt Holes	Weight lb
	304/304L	316/316L											
1/2	S1034WN4004N	S1036WN4004N	3.75	0.56	1.38	2.06	0.62	0.84	1.50	2.38	0.62	4	2
3/4	S1034WN4006N	S1036WN4006N	4.62	0.62	1.69	2.25	0.82	1.05	1.88	2.75	0.62	4	3
1	S1034WN4010N	S1036WN4010N	4.88	0.69	2.00	2.44	1.05	1.32	2.12	3.12	0.62	4	4
1-1/4	S1034WN4012N	S1036WN4012N	5.25	0.75	2.50	2.56	1.38	1.66	2.50	3.50	0.62	4	5
1-1/2	S1034WN4014N	S1036WN4014N	6.12	0.81	2.88	2.69	1.61	1.90	2.75	3.88	0.62	4	7
2	S1034WN4020N	S1036WN4020N	6.50	0.88	3.62	2.75	2.07	2.38	3.31	4.75	0.75	8	9
2-1/2	S1034WN4024N	S1036WN4024N	7.50	1.00	4.12	3.00	2.47	2.88	3.94	5.50	0.75	8	12
3	S1034WN4030N	S1036WN4030N	8.25	1.12	5.00	3.12	3.07	3.50	4.62	6.00	0.75	8	15
4	S1034WN4040N	S1036WN4040N	10.00	1.25	6.19	3.38	4.03	4.50	5.75	7.50	0.75	8	25
6	S1034WN4060N	S1036WN4060N	12.50	1.44	8.50	3.88	6.07	6.63	8.12	9.50	0.88	12	42
8	S1034WN4080N	S1036WN4080N	15.00	1.62	10.62	4.38	7.98	8.63	10.25	11.75	0.88	12	67
10	S1034WN4100N	S1036WN4100N	17.50	1.88	12.75	4.62	10.02	10.75	12.62	14.25	1.00	12	91
12	S1034WN4120N	S1036WN4120N	20.50	2.00	15.00	5.12	12.00	12.75	14.75	17.00	1.00	12	140

Raised Face 1/4"

### 300# Schedule 80 – Weld Neck Raised Face Flange

Size in	Part Number		A in	B in	C in	D in	E in	F in	G in	Bolt Circle in	Bolt Hole Diameter in	Number of Bolt Holes	Weight lb
	304/304L	316/316L											
1/2	S1034WN8004N	S1036WN8004N	3.75	0.56	1.38	2.06	0.54	0.84	1.50	2.38	0.62	4	2
3/4	S1034WN8006N	S1036WN8006N	4.62	0.62	1.69	2.25	0.74	1.05	1.88	2.75	0.62	4	3
1	S1034WN8010N	S1036WN8010N	4.88	0.69	2.00	2.44	0.95	1.32	2.12	3.12	0.62	4	4
1-1/4	S1034WN8012N	S1036WN8012N	5.25	0.75	2.50	2.56	1.27	1.66	2.50	3.50	0.62	4	5
1-1/2	S1034WN8014N	S1036WN8014N	6.12	0.81	2.88	2.69	1.50	1.90	2.75	3.88	0.62	4	7
2	S1034WN8020N	S1036WN8020N	6.50	0.88	3.62	2.75	1.93	2.38	3.31	4.75	0.75	8	9
2-1/2	S1034WN8024N	S1036WN8024N	7.50	1.00	4.12	3.00	2.32	2.88	3.94	5.50	0.75	8	12
3	S1034WN8030N	S1036WN8030N	8.25	1.12	5.00	3.12	2.90	3.50	4.62	6.00	0.75	8	15
4	S1034WN8040N	S1036WN8040N	10.00	1.25	6.19	3.38	3.82	4.50	5.75	7.50	0.75	8	25
6	S1034WN8060N	S1036WN8060N	12.50	1.44	8.50	3.88	5.76	6.63	8.12	9.50	0.88	12	42
8	S1034WN8080N	S1036WN8080N	15.00	1.62	10.62	4.38	7.62	8.63	10.25	11.75	0.88	12	67
10	S1034WN8100N	S1036WN8100N	17.50	1.88	12.75	4.62	9.75	10.75	12.62	14.25	1.00	12	91
12	S1034WN8120N	S1036WN8120N	20.50	2.00	15.00	5.12	11.75	12.75	14.75	17.00	1.00	12	140

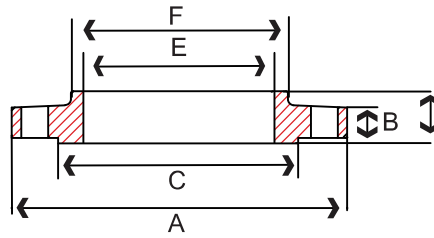
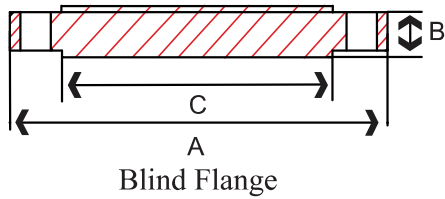
Raised Face 1/4"





# Stainless Flanges - 600#

FLANGES



## 600# – Blind (Hi-Hub) Raised Face Flange

Size in	Part Number		A in	B in	C in	Bolt Circle in	Bolt Hole Diameter in	Number of Bolt Holes	Weight lb
	304/304L	316/316L							
1/2	S1064BL004N	S1066BL004N	3.75	0.56	1.38	2.62	0.62	4	1
3/4	S1064BL006N	S1066BL006N	4.62	0.62	1.69	3.25	0.75	4	2
1	S1064BL010N	S1066BL010N	4.88	0.69	2.00	3.50	0.75	4	2
1-1/4	S1064BL012N	S1066BL012N	5.25	0.81	2.50	3.88	0.75	4	3
1-1/2	S1064BL014N	S1066BL014N	6.12	0.88	2.88	4.50	0.88	4	4
2	S1064BL020N	S1066BL020N	6.50	1.00	3.62	5.00	0.75	8	5
3	S1064BL030N	S1066BL030N	8.25	1.25	5.00	6.62	0.88	8	9
4	S1064BL040N	S1066BL040N	10.00	1.50	6.19	8.50	1.00	8	17
6	S1064BL060N	S1066BL060N	12.50	1.88	8.50	11.50	1.12	12	26

Raised Face 1/4"

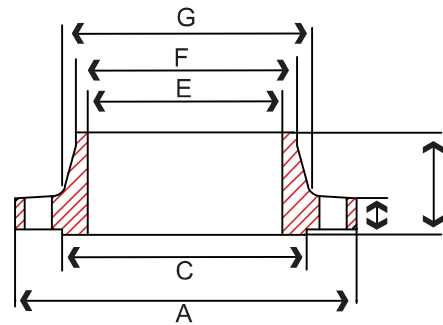
## 600# – Slip-On Raised Face Flange

Size in	Part Number		A in	B in	C in	D in	E in	F in	Bolt Circle in	Bolt Hole Diameter in	Number of Bolt Holes	Weight lb
	304/304L	316/316L										
1/2	S1064SO004N	S1066SO004N	3.75	0.56	1.38	0.88	0.88	1.50	2.62	0.62	4	1
3/4	S1064SO006N	S1066SO006N	4.62	0.62	1.69	1.00	1.09	1.88	3.25	0.75	4	2
1	S1064SO010N	S1066SO010N	4.88	0.69	2.00	1.06	1.36	2.12	3.50	0.75	4	2
1-1/4	S1064SO012N	S1066SO012N	5.25	0.81	2.50	1.12	1.70	2.50	3.88	0.75	4	3
1-1/2	S1064SO014N	S1066SO014N	6.12	0.88	2.88	1.25	1.95	2.75	4.50	0.88	4	3
2	S1064SO020N	S1066SO020N	6.50	1.00	3.62	1.44	2.44	3.31	5.00	0.75	8	5
3	S1064SO030N	S1066SO030N	8.25	1.25	5.00	1.81	3.57	4.62	6.62	0.88	8	8
4	S1064SO040N	S1066SO040N	10.00	1.50	6.19	2.12	4.60	0.94	8.50	1.00	8	13
6	S1064SO060N	S1066SO060N	12.50	1.88	8.50	2.62	6.72	1.06	11.50	1.12	12	19

Raised Face 1/4"



# Stainless Flanges - 600#



Weld Neck Flange

### 600# Schedule 40 – Weld Neck Raised Face Flange

Size in	Part Number		A in	B in	C in	D in	E in	F in	G in	Bolt Circle in	Bolt Hole Diameter in	Number of Bolt Holes	Weight lb
	304/304L	316/316L											
1/2	S1064WN4004N	S1066WN4004N	3.75	0.56	1.38	2.06	To be specified by purchaser	0.84	1.50	2.62	0.62	4	2
3/4	S1064WN4006N	S1066WN4006N	4.62	0.62	1.69	2.25		1.05	1.88	3.25	0.75	4	4
1	S1064WN4010N	S1066WN4010N	4.88	0.69	2.00	2.44		1.32	2.12	3.50	0.75	4	4
1-1/4	S1064WN4012N	S1066WN4012N	5.25	0.81	2.50	2.62		1.66	2.50	3.88	0.75	4	6
1-1/2	S1064WN4014N	S1066WN4014N	6.12	0.88	2.88	2.75		1.90	2.75	4.50	0.88	4	8
2	S1064WN4020N	S1066WN4020N	6.50	1.00	3.62	2.88		2.38	3.31	5.00	0.75	8	12
3	S1064WN4030N	S1066WN4030N	8.25	1.25	5.00	3.25		3.50	4.62	6.62	0.88	8	23
4	S1064WN4040N	S1066WN4040N	10.00	1.50	6.19	4.00		4.50	0.94	8.50	1.00	8	42
6	S1064WN4060N	S1066WN4060N	12.50	1.88	8.50	4.62	6.63	1.06	11.50	1.12	12	81	

Raised Face 1/4"

### 600# Schedule 80 – Weld Neck Raised Face Flange

Size in	Part Number		A in	B in	C in	D in	E in	F in	G in	Bolt Circle in	Bolt Hole Diameter in	Number of Bolt Holes	Weight lb
	304/304L	316/316L											
1/2	S1064WN8004N	S1066WN8004N	3.75	0.56	1.38	2.06	To be specified by purchaser	0.84	1.50	2.62	0.62	4	2
3/4	S1064WN8006N	S1066WN8006N	4.62	0.62	1.69	2.25		1.05	1.88	3.25	0.75	4	4
1	S1064WN8010N	S1066WN8010N	4.88	0.69	2.00	2.44		1.32	2.12	3.50	0.75	4	4
1-1/4	S1064WN8012N	S1066WN8012N	5.25	0.81	2.50	2.62		1.66	2.50	3.88	0.75	4	6
1-1/2	S1064WN8014N	S1066WN8014N	6.12	0.88	2.88	2.75		1.90	2.75	4.50	0.88	4	8
2	S1064WN8020N	S1066WN8020N	6.50	1.00	3.62	2.88		2.38	3.31	5.00	0.75	8	12
3	S1064WN8030N	S1066WN8030N	8.25	1.25	5.00	3.25		3.50	4.62	6.62	0.88	8	23
4	S1064WN8040N	S1066WN8040N	10.00	1.50	6.19	4.00		4.50	0.94	8.50	1.00	8	42
6	S1064WN8060N	S1066WN8060N	12.50	1.88	8.50	4.62	6.63	1.06	11.50	1.12	12	81	

Raised Face 1/4"